

Manual of single station pneumatic mark heat press machine



The information contained on this Document is considered to be confidential material proprietary to JYL-Tech, and this information shall not be disclosed, duplicated or copied for any purpose, Nor made available for any third party without the prior consent to JYL-Tech.

Content

Outline.....	1
Feature.....	2
Technical Specifications.....	3
Installation and operating instructions.....	4
Service.....	5
Printing equipment and heat transfer equipment warranty.....	6
English manual.....	7
Machine parts labeled diagram.....	8
Circuit wiring diagram.....	9

Outline

Native single station pneumatic mark heat press machine mainly used for heat transfer all kinds of hat, cap, It can be used for colorful design of sublimation ink and Eco solvent ink on cotton, linen, fiber and so on by heat press with good printing effect, It also can be used for flocking etc, Economic and practical, Convenient.

Features

- It adopts digital Thermostatic controller, High accuracy ($\pm 2^{\circ}\text{C}$);
- Heating plate used imported aluminum alloy casting thermal principle, power, temperature uniformity, small temperature coefficient;
- Electronic time control, process to complete the signal instructions; pressure to adjust;

Technical parameters

- Voltage (V) : 220/110
- Power (KW) : 0.5
- Temperature range($^{\circ}\text{C}$): 0-399
- Time range(S): 0-999
- Printing size(cm): 10×15 15×15 20×20

Installation and instruction

- ① The machine should be placed on a smooth ground, the machine should be more than one meter of space around to facilitate the installation and maintenance。
- ② To determine the machine installation position, the installation of a fixed tripod, fixed tripod, put the machine on the tripod, steady machine, to determine the machine installation location, equipped with single-phase 220V voltage or 110V voltage AC power, Voltage fluctuation range -10% -5% of the knife switch or air switch(Note: the voltage fluctuation range -10% -5% when equipped with a suitable regulator), In order to control the power on and off, and must be connected to a reliable line. After installation, and then carefully check once, so as not to mistake。 **(Note: The machine must have a suitable protective ground wire)**
- ③ Connect the compressor air connector, open the air pressure, the pressure gauge modulation (4pB-6pB) so that the heating plate, the maximum pressure adjustable to 8 pB;
- ④ Plug in the power, turn on the power switch, the temperature time integration indicator light immediately;
- ⑤ Adjust the thermometer to the desired temperature (usually 120 ° C to 200 ° C);
- ⑥ Adjust the schedule to the desired time (usually about 10 to 30 seconds);
- ⑦ When the machine is ready to enter the working state, please put the substrate on the table, and then put on the heat transfer paper (Note: Transfer paper positive and negative):
- ⑧ When operating the machine: the machine has two workstations, through the table around the horizontal operation to complete the printing tasks. The machine is equipped with automatic and manual function, when the manual function, the first table to move under the heating plate below the table to reach the specified location, press the manual button, the heating plate immediately under pressure, hot pressure specified time to , Then the heating plate automatically rises, and then move the second table, repeat the action to complete the second table on the hot stamping task; when using the automatic function, the first table to move below the heating plate, After the table reaches the specified position, the heating plate is pressed down, the hot pressing time is specified, the heating plate is automatically raised, and then the second table can be moved, and the operation of the second worktable can be repeated. (Note: the hot mark machine is equipped with anti-pressure hand device, the device only to prevent the operator because of careless pressure when the hand of another emergency measures, not as a machine commonly used switch, please follow the operating rules)。
- ⑨ When operating the machine: the machine in the use of the main foot switch to control the machine work, when the machine is working, set the working temperature and time, the substrate and the substrate was put away, with pedal about the foot switch , The heating plate under pressure, work set time to the heating plate to rise, remove the printed items that the completion of the printing tasks。
- ⑩ If it is cold tear of the heat transfer paper, please use a blackboard to rub the heat paper pressure equal to rub again, and so on 5-20 seconds,If it is hot-cut hot paper, hot stamping finished immediately torn off the heat paper. Successful stamping need to have the right time, temperature and pressure with the clothing, the thickness of the hat and the type of material and heat transfer paper are affecting the effect of hot stamping. (All kinds of transfer paper need to be hot after approval, before mass production.)

Maintenance

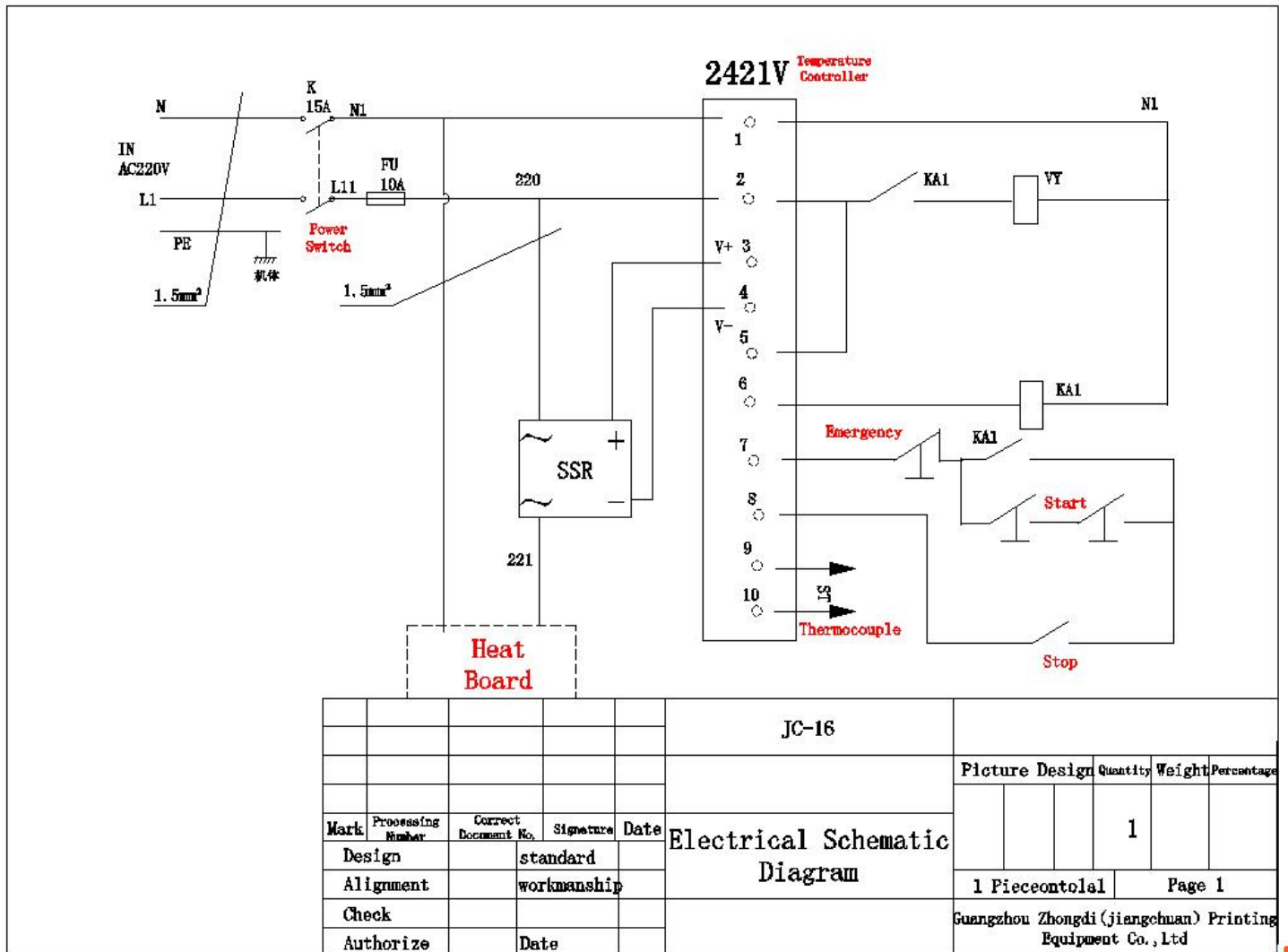
1. Pressure: heating plate is not flat, adjustable than the center of the four heating rods; if the pressure is not enough, adjustable than the machine filter, the filter on the left side of the raised protrusions, clockwise is to increase the pressure, Hour hand is to reduce the pressure, note: the maximum pressure adjustable to 8PB.
2. Time: When the hot stamping time is reached and the heating plate is not raised, check whether the solenoid valve contact is burned or the schedule is burnt.
3. Temperature: When the temperature reaches the temperature, the thermostat LCD will show the required temperature, if not warming, check ① contactor is broken; ② whether the failure of the thermometer; ③ heat pipe is burned; ④ high temperature line Fall off.
4. Heating plate is not under pressure: ① check the workbench is in place; ② air pressure is above 4pB; ③ sensor switch and magnet induction; ④ timetable whether the timing, accounting, then the sensor switch is no problem check the solenoid valve; Whether the valve is electric, there is no action, there is a solenoid valve bad.

Note: The air pressure should be transferred to (4pB-6pB), such as the heating plate is not raised, please check the pressure line, solenoid valve is smooth, the filter is open.

Printing equipment and thermal transfer equipment warranty

1. In the warranty period by virtue of this single and delivery receipt (or receipt receipt) repair;
2. Warranty period: from sale for one year.
3. Warranty Note:
 - ◆ Those who have not been dismantled, is indeed a bad product manufacturing failure or damage, by the factory is responsible for repair or replacement of damaged parts; improper use of others for the manufacture of fault or damage, not a warranty;
 - ◆ Spring, silicone, high temperature cloth and other non-electrical accessories are not covered by the warranty;
 - ◆ If the user is in contact with my company or with a local dealer to solve the quality problem, please specify the machine model, factory number, fault phenomenon。

Circuit board



The information contained on this Document is considered to be confidential material proprietary to JYL-Tech, and this information shall not be disclosed, duplicated or copied for any purpose, Nor made available for any third party without the prior consent to JYL-Tech.