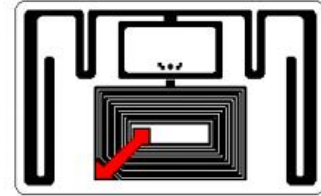
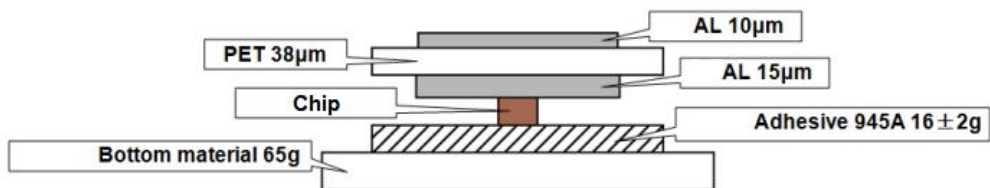
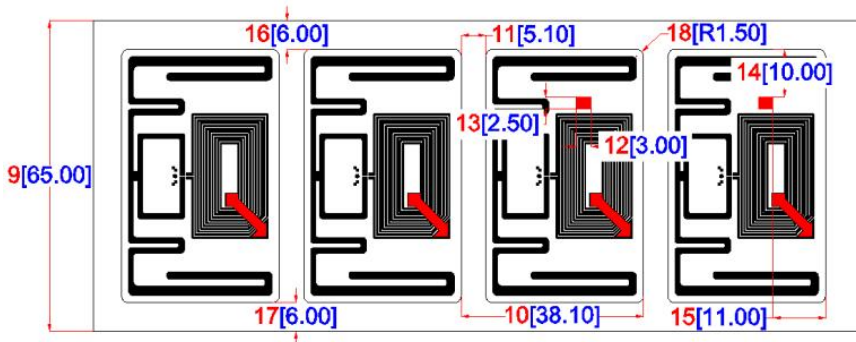
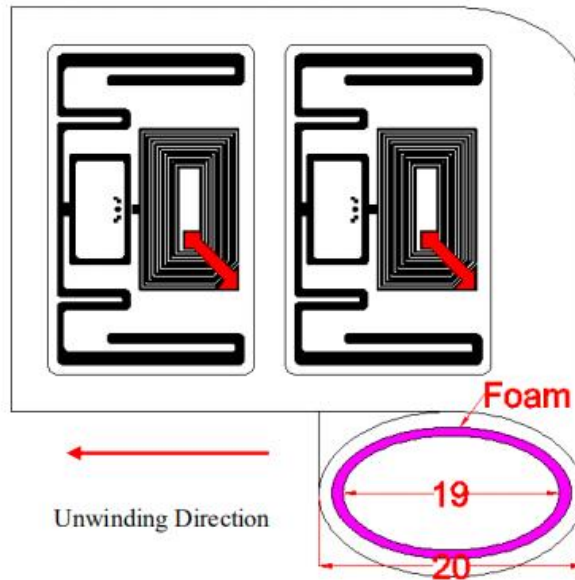


J3050EM4423A

EM4423 RFID Inlay



Appearance



The information contained on this Document is considered to be confidential material proprietary to JYL-Tech, and this information shall not be disclosed, duplicated or copied for any purpose, Nor made available for any third party without the prior consent to JYL-Tech.

Dimensions

| | |
|--|-----------------------|
| Antenna Length | 30.00±0.20mm |
| Antenna Width | 50.00±0.20mm |
| Wet Inlay Length | 33.00±0.20mm |
| Wet Inlay Width | 53.00±0.20mm |
| Antenna (top) to Wet Inlay (top) | 1.50±1.00mm |
| Antenna (bottom) to Wet Inlay (bottom) | 1.50±1.00mm |
| Antenna (left) to Wet Inlay (left) | 1.50±1.00mm |
| Antenna (right) to Wet Inlay (right) | 1.50±1.00mm |
| Substrate Width | 65.00±1.00mm |
| Wet Inlay Pitch | 38.10±0.50mm |
| Wet Inlay Gap | 5.10±0.50mm |
| Ink Mark Length | 3.00±0.50mm |
| Ink Mark Width | 2.50±0.50mm |
| Ink Mark (top) to Wet Inlay (top) | 10.00±1.00mm |
| Ink Mark (right) to Wet Inlay (right) | 11.00±1.00mm |
| Wet Inlay (top) to Substrate (top) | 6.00±1.00mm |
| Wet Inlay (bottom) to Substrate (bottom) | 6.00±1.00mm |
| Wet Inlay Corner Radius | 1.50±0.20mm |
| Roll ID | 3 inch (76.20±0.50mm) |
| Roll OD | ≅ 210mm |

Electrical Characteristics

| Item | Description | Remarks |
|-----------------|---|---------|
| Bottom Material | 65g glassine paper | |
| IC | EM4423 | |
| Base Material | PET | |
| Antenna | Etched Aluminum (15 μ m) + PET (38 μ m) | UHF |
| | Etched Aluminum (15±3 μ m) + PET (38±4 μ m) + Gap | HF |
| | Bridge Aluminum (10±1 μ m) | |

| | | |
|---------------------------------|----------------------------|-----------------------|
| Protocol | ISO/IEC 18000-63 | UHF |
| | ISO14443A | HF |
| UII/EPC Memory | 128 Bits / 224 Bits | UHF |
| User Memory | 160 Bits / 64 Bits | UHF |
| TID/UID Memory | 96 Bits | UHF |
| | 56 Bits | HF |
| Password | Access: 32 Bits | |
| | Kill: 32 Bits | |
| Frequency | 860-960MHz | UHF |
| | 13.56MHz | HF |
| Operating Mode | Passive | |
| IC Life | 100,000 programming cycles | |
| | 10 years data retention | |
| ESD Voltage Immunity Max. 2000V | | Human body mode (HBM) |

Environment Requirements

Operating Temperature/Humidity: -5 ~ 60°C / 20% ~ 80% RH

Storage Temperature/Humidity: 20 ~ 30°C / 20% ~ 60% RH

Shelf Life: From the date of manufacture, 1 year in anti-static bag at 20 ~ 30°C / 20% ~ 60% RH

Package Info.:

ESD package box 5,000pcs/roll, 4 or 8 rolls/ctn. Packing in roll for printing and cutting at customer

